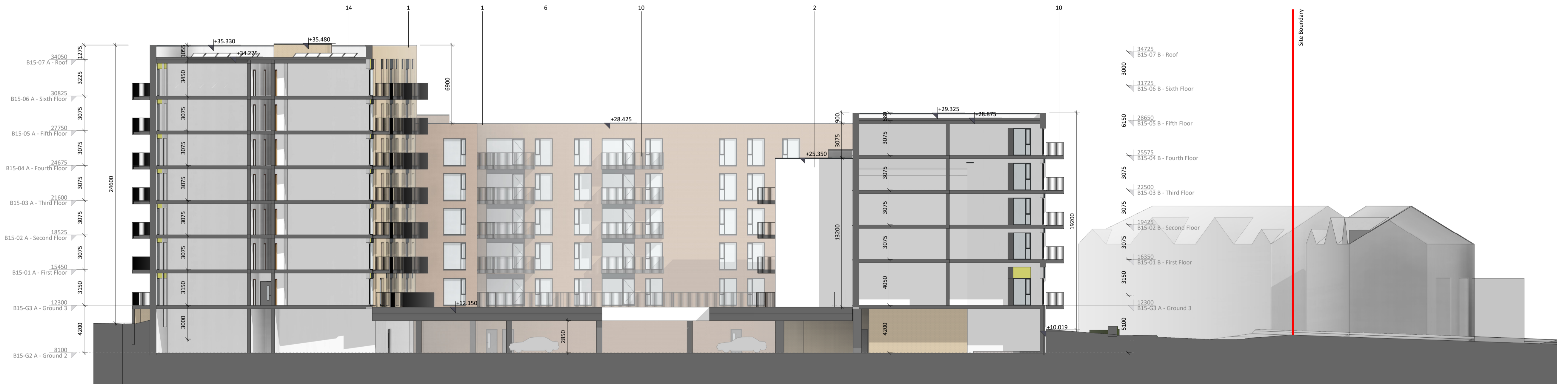




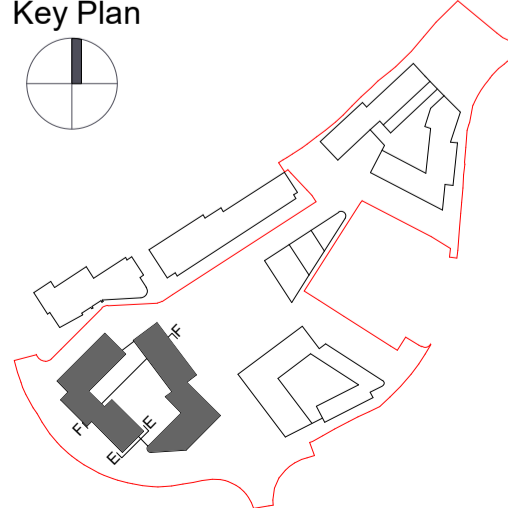
② B15 Section E-E
1:200



① B15 Section F-F
1:300

Block 15 Sections

Key Plan



Material Key

- 1 Selected brick finish
- 2 Selected render finish
- 3 Selected stone / reconstructed stone finish
- 4 Selected metal cladding
- 5 Selected metal roofing
- 6 Selected windows
- 7 Selected frameless curtain wall system
- 8 Selected metal louvers
- 9 Selected metal railing
- 10 Selected metal balcony
- 11 Selected glass balustrade
- 12 Selected winter garden system with metal frame
- 13 Selected metal frame
- 14 Selected PV Panels
- 15 Canopy

Revision Description

Revision Description	Date	Rev. No.	Issued by
SHD Application to An Bord Pleanála	10-06-2022	C01	CC/AN

Figured dimensions only to be used. This drawing is copyright of O'Mahony Pike Architects Ltd. All information is shared as per approved use in accordance with ISO19650-2:2018, Table 5; Standard Codes for Suitability of Models and Documents and the BEP. If the 'Status' field is empty, this information has been shared at 50 - WIP.



architecture | urban design
email: info@omahonypike.com
tel: +353 1 202 7400
fax: +353 1 283 0822
www.omahonypike.com

Dublin
The Chapel
Mount St. Anne's
Milltown, Dublin 6
D06 XNS2 Ireland

Cork
One South Mall
Cork City
Co. Cork
T12 CCN3 Ireland

Project Code: 1730D
Project Lead: SD
Drawn By: CC/AN
Job No.: 1730D
Purpose: Planning

Scale @ A1: 1:200
Date: 10-06-2022
Revision: C01
Status: A3

Project: Jacob's Island Strategic Housing Development
Location: Jacobs Island, Mahon, Co.Cork
Client: Hibernia Star Ltd.

Drawing Title: Block 15 Sections
Drawing No.: 1730D-OMP-B15-ZZ-DR-A-3002

Source File: 1730D-OMP-ZZ-22-M3-A-0001.rvt